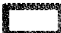






Attachment 1

| | A | B | C | D | E | F | G |
|---|-------------------|--------------------------------|----------|-------|---------|------|---------------------------|
| 1 | SOURCE NAME | TO TRIBUTARY | TOWNSHIP | RANGE | SECTION | QQ | SURVEY CODE AND NUMBER |
| 2 | Gold Center Creek | Middle Fork St Maries River | 43N | 03E | 34 | NENE | |
| 3 | Unnamed Stream | Gold Center Creek | 43N | 03E | 34 | NESE | |
| 4 | Gold Center Creek | Middle Fork St Maries River | 43N | 03E | 34 | SENE | |
| 5 | Unnamed Stream | Gold Center Creek | 43N | 03E | 34 | SWSE | |

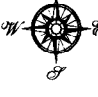

Attachment 2
 Place of Use Map Fire Suppression - Water Right No. 92-11078F
 National Forests in Idaho and the Kaniksu, Lolo and Kootenai NF in Montana

Key to Features

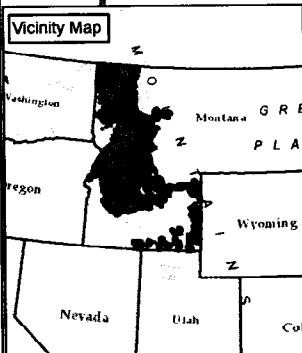
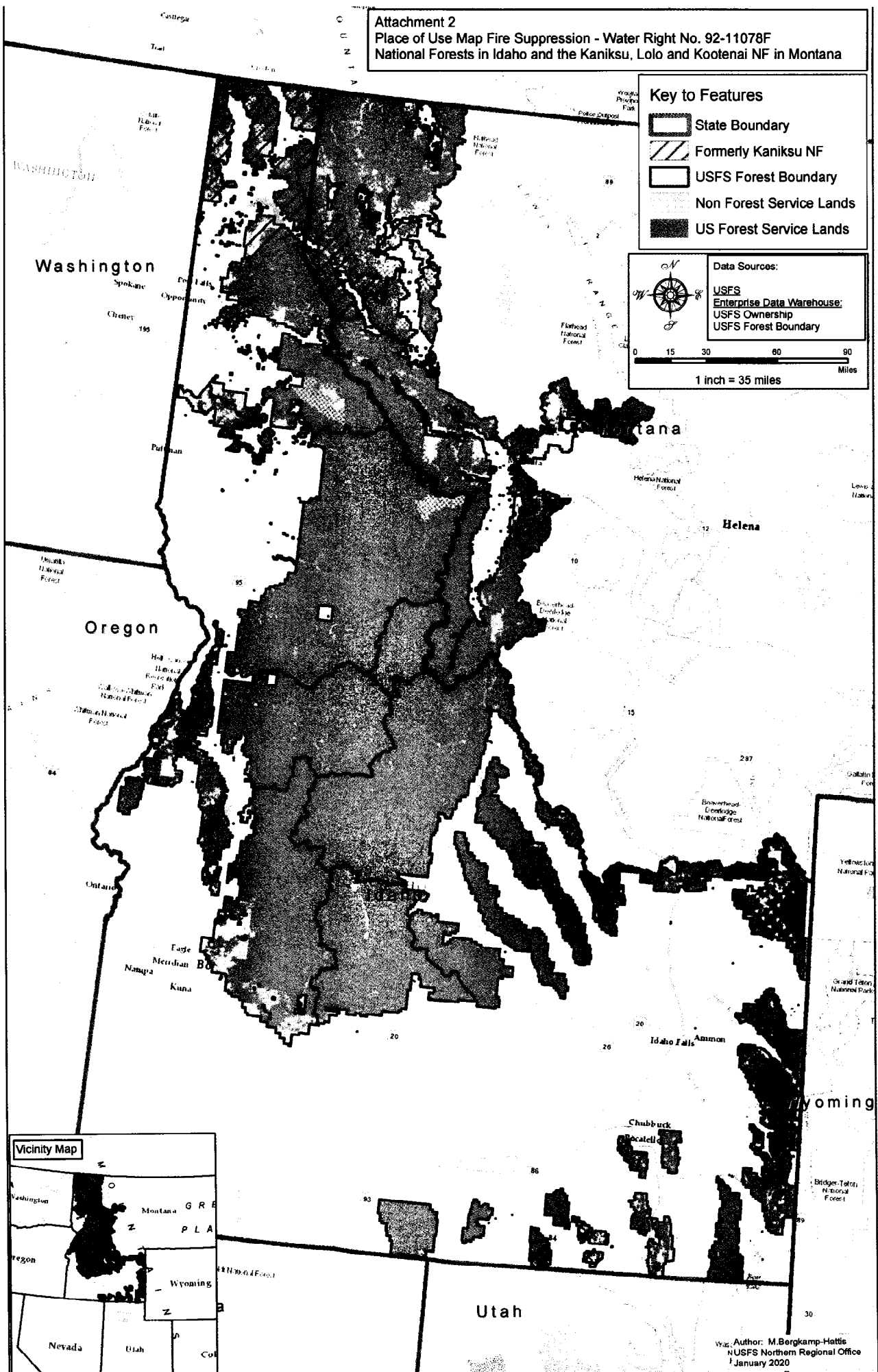
-  State Boundary
-  Formerly Kaniksu NF
-  USFS Forest Boundary
-  Non Forest Service Lands
-  US Forest Service Lands

Data Sources:

- USFS
- Enterprise Data Warehouse:
- USFS Ownership
- USFS Forest Boundary

1 inch = 35 miles



Author: M. Bergkamp-Hattis
 NUSFS Northern Regional Office
 January 2020